



MEDIZINISCHE UNIVERSITÄT
INNSBRUCK

EORTC QLQ Meeting

Plenary:
EORTC CHES - Update
Electronic Data Collection Project

Bernhard Holzner
Johannes Giesinger
Gerhard Rumpold

Department of Psychiatry and Psychotherapy
Innsbruck Medical University

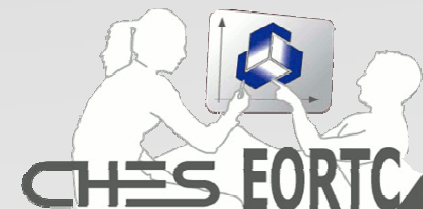
Evaluation Software Development (ESD)
ONCOTYROL – Center for Personalized Cancer Medicine

Innsbruck, September 2011



CHES-EORTC project details

- ⇒ 2.5-years grant – project will end in September 2012
- ⇒ Development of a CHES-EORTC version:
Dissemination of the software for electronic
administration of the QLQ-C30 and its modules
- ⇒ Available for download via website

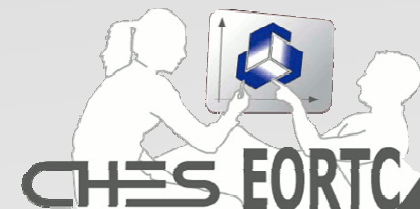




MEDIZINISCHE UNIVERSITÄT
INNSBRUCK

Update - What have we done since March 2011

- ⇒ Fund-raising to guarantee sustainability of the project
- ⇒ Implementation of web-based Home Monitoring RCT to evaluate potential benefits for symptom management
- ⇒ Computer-adaptive Testing in cooperation with Mogens and Morten (software interface...)
- ⇒ Cooperation with Corneel (IT EORTC QL Department)
- ⇒ Adaptation of questionnaires for Samsung Galaxy Tab 10.1
- ⇒ Update of CHES Manual
- ⇒ Writing of a paper describing CHES (almost done)
- ⇒ Implementation of CHES at a further clinic (Department of Nuclear Medicine – Innsbruck Medical University)





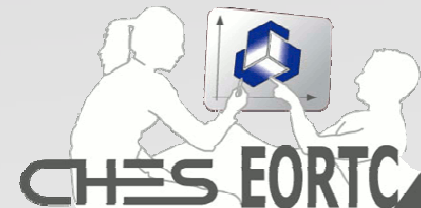
MEDIZINISCHE UNIVERSITÄT
INNSBRUCK

CHES-EORTC further funding

- ⇒ Currently funding from ONCOTYROL (2010-2012) (a major governmental initiative for cancer research in Austria)
- ⇒ Expecting decision on next funding period for ONCOTYROL (2012-2015) in the next few days
- ⇒ Further funding was raised through a grant from the Austrian National Bank (2011-2014). Project will evaluate the impact of PRO Home Monitoring.
- ⇒ We are currently writing a proposal for the Austrian Science Fund to get additional money
- **The project is constantly moving forward!**

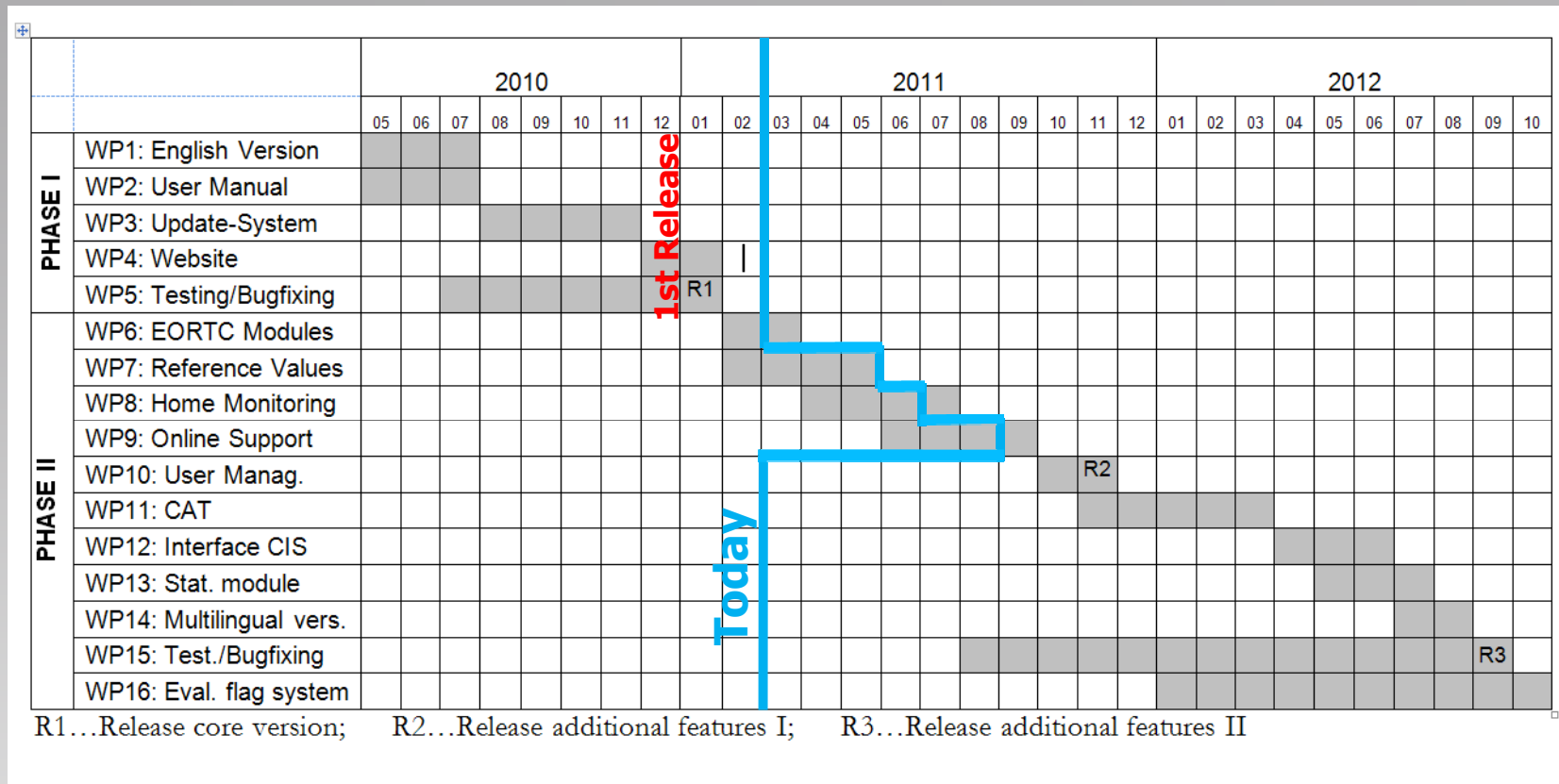
oncotyrol

Center for Personalized Cancer Medicine



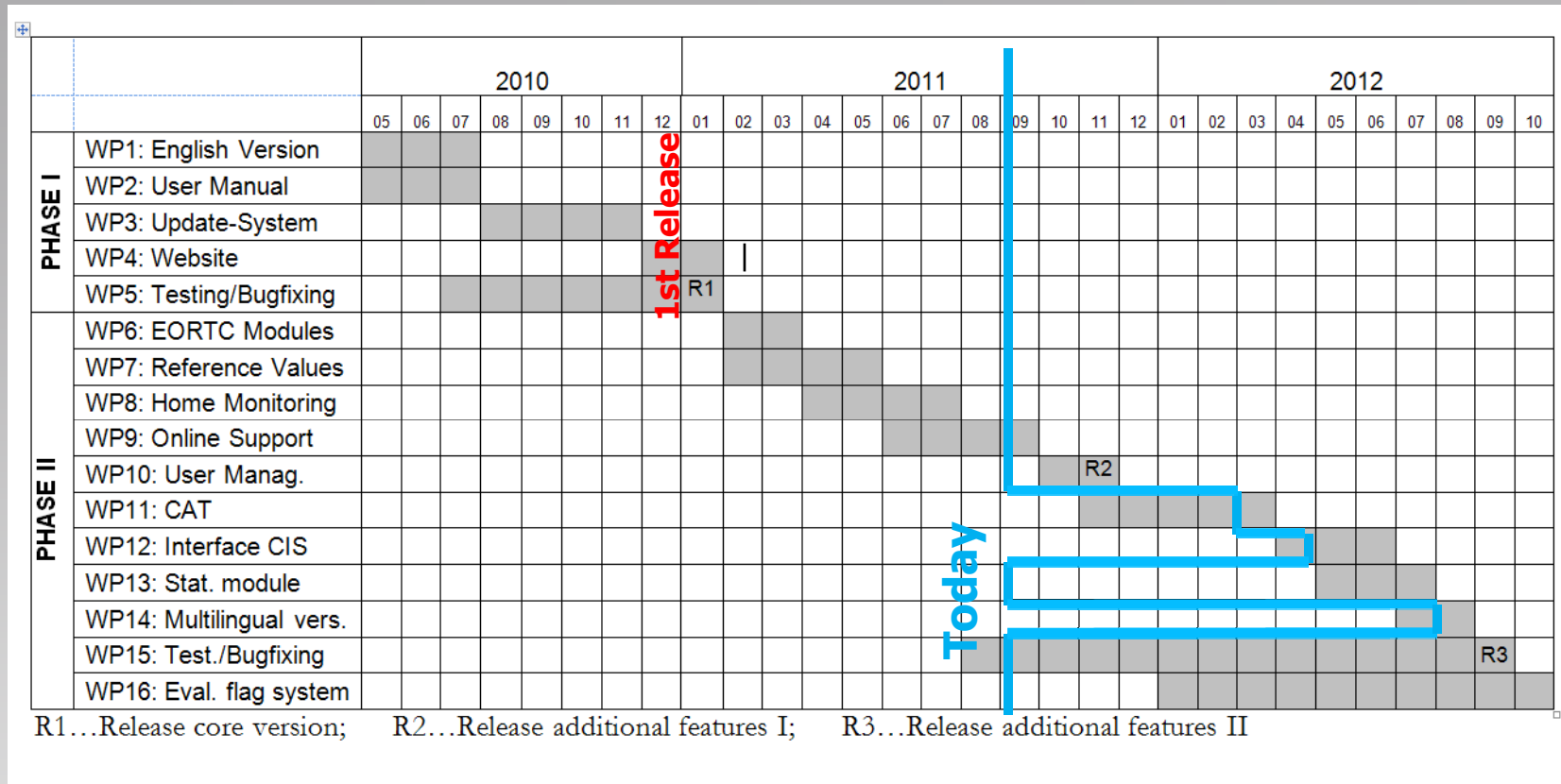


Grant - Roadmap





Grant - Roadmap



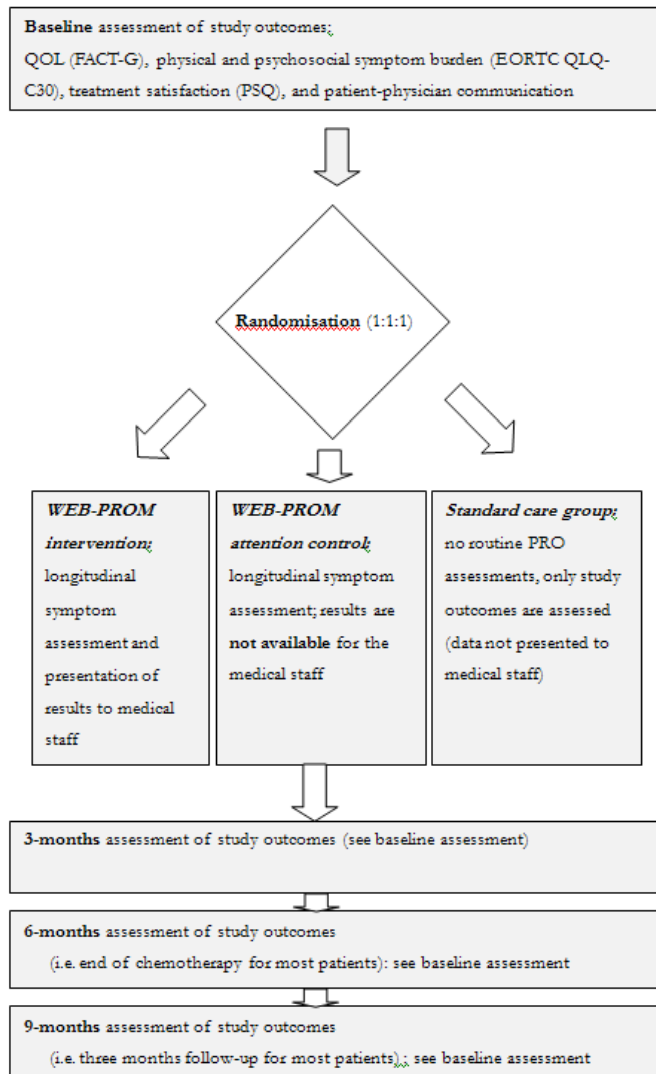
New WP17: Implementation of eCRF – Researcher Front-End





RCT on the impact of Home Monitoring in chemotherapy patients

Figure 1: Study design flow chart



Aim A: Implementation and feasibility testing of WEB-PROM in routine clinical care

Aim B: Investigation of possible underestimation of “true” symptom burden, if assessing symptom burden only during hospital visits

Aim C: Randomised controlled trial on the efficacy of WEB-PROM for reducing physical and psychosocial symptom burden and increasing treatment satisfaction





MEDIZINISCHE UNIVERSITÄT
INNSBRUCK

Implementation of CHES at the Dept. of Nuclear Medicine – Innsbruck

- ⇒ Starting point: Since some years paper-based EORTC QLQ-C30
- ⇒ Implementation of CHES incl. QLQ-C30 in several languages. Additional EORTC GI.NET module
- ⇒ Import of all previously collected QOL data
- ⇒ Import and completion of relevant medical data (for research purposes)
- ⇒ Use of CHES for an ongoing trial at the Department
- ⇒ Start of psychooncological screening based on EORTC EF scale.
- ⇒ Important issue for success: support from the nursing staff

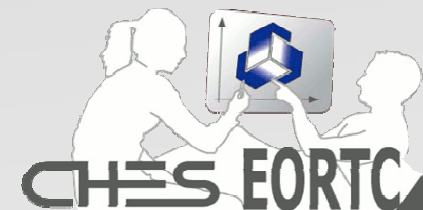




MEDIZINISCHE UNIVERSITÄT
INNSBRUCK

Software demonstration...

- ⇒ Web-based home monitoring
- ⇒ eCRF (Researcher front end)





MEDIZINISCHE UNIVERSITÄT
INNSBRUCK

Second release of CHES-EORTC

November 2011:

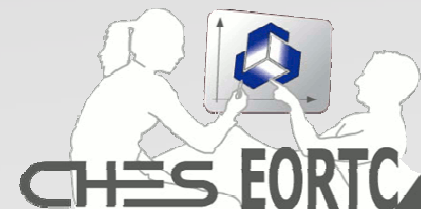
Stand alone version incl. CAT

English software version available for
download for EORTC QLQ members

Web-based monitoring

E-mail notification before release

Members interested in use will receive user name
and password (required for download)



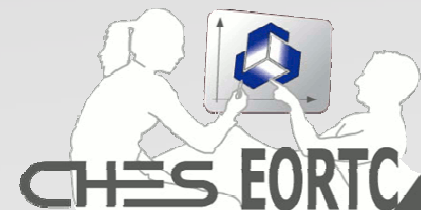


MEDIZINISCHE UNIVERSITÄT
INNSBRUCK

CHES-EORTC Website

Since October 2010 www.ches.at/eortc is online providing:

- Software distribution and update
- Relevant information and literature on ePRO
- **Discussion forum**
- FAQ





MEDIZINISCHE UNIVERSITÄT
INNSBRUCK



Many thanks for your attention!

