

# **EORTC**

## **Update on the activities of the Quality of Life Unit**

**Andrew Bottomley Ph.D**

**EORTC Quality of Life Unit, Brussels**

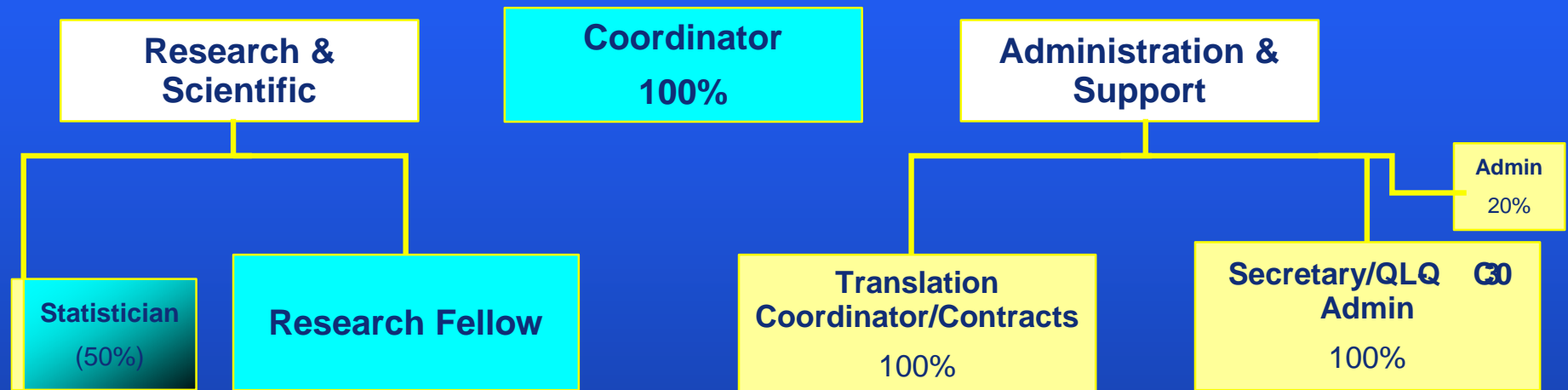
**November 2005**

# **EORTC Quality of life Unit**

## **Key Functions**

- **To supervise the evaluation of QOL in selected cancer clinical trials**
- **To encourage physicians to pay greater attention to QOL factors in the treatment of cancer by stimulating, enhancing and co-ordinating the evaluation of quality of life in cancer clinical trials**
- **To develop outcome tools for use in clinical trials with the QLG and other collaborators**

# Structure of the Quality of Life Unit



**Staffing levels : Total < 5% of the Data Center Staff**

**2.2 FTE admin staff**

**2.5 FTE scientific staff (2.5% of the Data Center staff)**

**■ QLG funded position**

**■ Data Center/EC/  
other funded**

# Key functions

- **Collaborating with the QLQ (principally administrative)**
  - QLQ G30/module administration (70 requests per week)
  - Contracts with pharmaceutical Co. (73 new signed in 2005)
  - Managing a translation program (65 new translations in 2005)
  - Product/distribute of QLQ manuals (10 manuals, CDs =ASCO, ECCO)
  - Developing and maintaining web site (updated monthly, revised October)
- **Scientific research shifted to clinical groups**
  - Major change in drug development environment (slower, expensive, pharma driven, over regulated and controlled)
  - Study design (2 new RCT with QOL in 2005)
  - Methodological research (PFA funded by BCG, Sir Ronald, Merck)
  - Clinical trials support (supervision, training of DC staff)
  - Education (courses, meetings, ect)

## Completed and published collaborative projects in 2005

<u>Group</u>	<u>Study</u>	<u>Journal/congress</u>
• QLQ	- SAT 32 field study	ASCO 2005/ EJC
• Lung CG	- Longitudinal QOL in mesothelioma	WLCC 2005/ JCO
• Lung CG	- QOL PFA in NSCLS	ISOQOL 2005
• Lung CG	- QOL PFA in mesothelioma	ISQOOL 2005
• Lung CG	- SILVA trial	JCO
• Brain/RT/NCIC	- QOL in glioblastoma patients	The Lancet Oncology
• Brain/RT/NCIC	- PFA in glioblastoma patients	ASCO 2005
• Brain/RT/NCIC	- Bootstrap validation	ISOQOL 2005
• Breast CG	- Long term outcomes in LABC	Lancet Oncology
• GI CG	- Colorectal cancer PFA QOL	ASCO 2005/EJC

# Active ongoing joint collaborative research

<u>Group</u>	<u>Study</u>	<u>Status</u>
• QLG/GU	- PR25 field study	Analysis ongoing
• Chrono CG	- Longitudinal outcomes (05962)	Analysis ongoing
• Chrono CG	- QOL in colorectal/chronomodulation	Analysis ongoing
• Lung CG	- SILVA full QOL trial results	Draft MS
• Breast CG	- CBR and QOL: Any relationship?	pending closure
• CAM	- Systematic review of CAM and QOL	Draft MS

# Summary

- **The oncology environment is rapidly changing as is the EORTC**
- **The QLU provides administrative support for the QLG but now limited QLU/QLG prospective studies**
- **QLU scientific focus/funding from EORTC clinical groups**
- **Future research focus towards clinical treatments rather than measurement**