

EORTC
Brief update on the activities of the
Quality of Life Unit

Andrew Bottomley Ph.D

EORTC Quality of Life Unit, Brussels

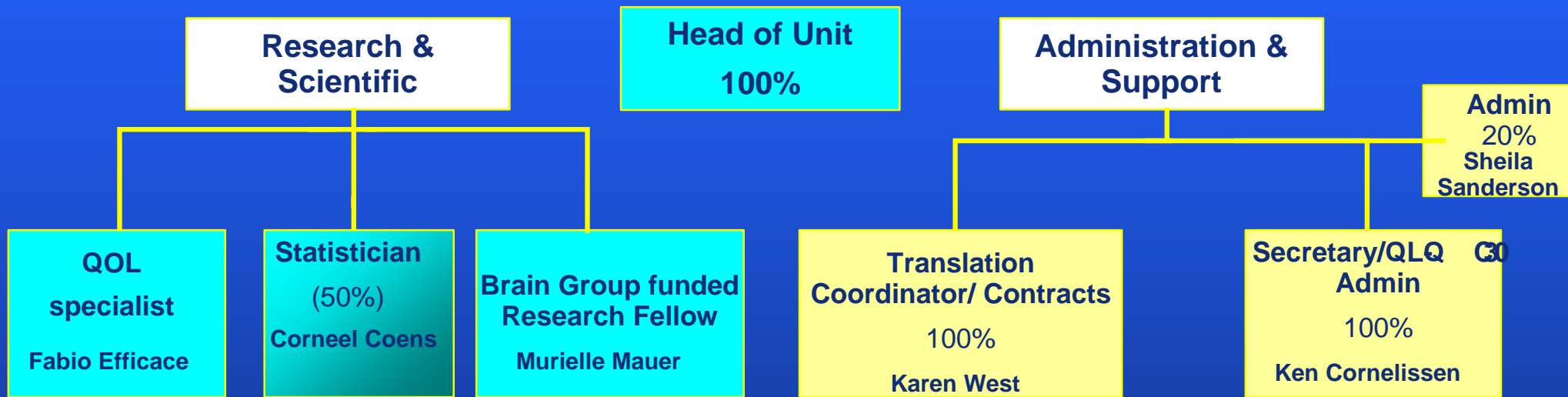
4th May 2006

EORTC Quality of life Unit

Key Functions – Shift in focus

- **To supervise the design, conduct and evaluation of QOL in selected cancer clinical trials**
- **To encourage physicians to pay greater attention to QOL factors in the treatment of cancer by stimulating, enhancing and co-ordinating the evaluation of quality of life in cancer clinical trials**
- **To collaborate with the QLG on joint scientific initiatives to develop tools when possible and administrative and translation matters**

Structure of the Quality of Life Unit in 2006



Staffing levels : 7 bodies

■ QLG funded position 2.2 persons

■ Data Center/Pharma/ EORTC BCG

Key actions with the QLG: Are on the increase !

Collaborating with the QLG (principally administrative)

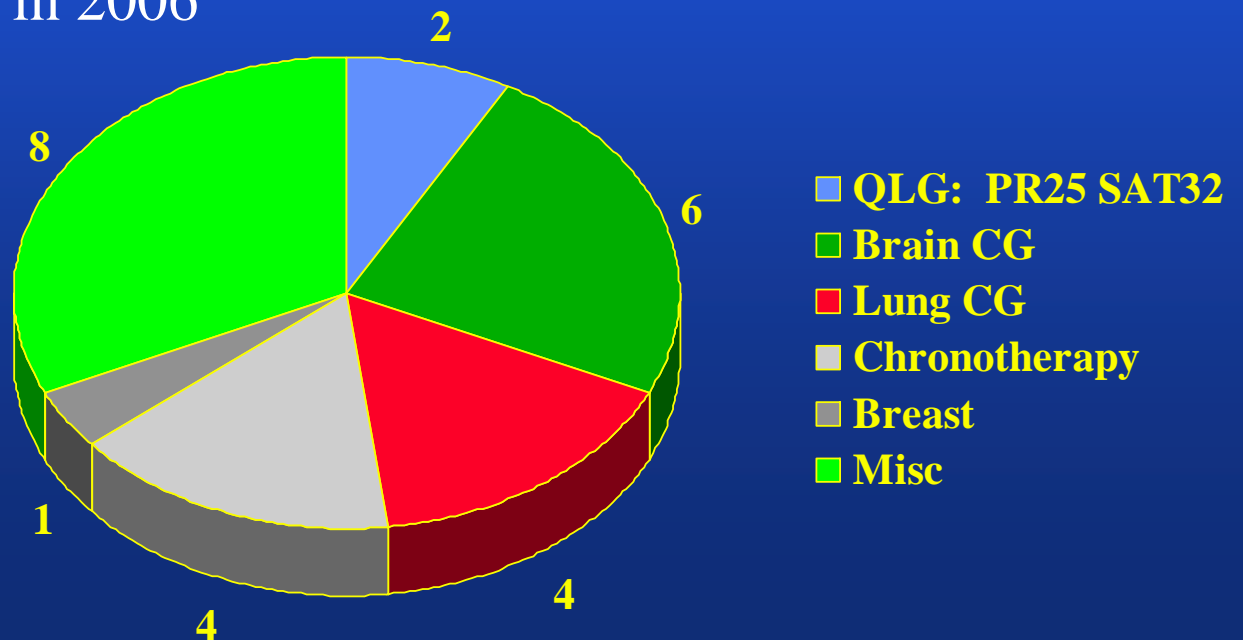
- QLQ 30/module administration (600 agreements signed since Jan 2006)
- Contracts with pharmaceutical co. (20 new signed in since Jan 2006)
- Managing a translation program (48 new translations in 2006)
- Produce/distribute of QLG manuals (New newsletter, +CDs =ASCO, ESO)
- Developing/advancing the item bank (version 1 under review, version 2?)
- Developing and maintaining web site (updated monthly, revised April)
 - Average hits in 2005= 500 per month
 - Average hits in 2006= 900 per month

QLU scientific functions : New studies, analysis and preparation of trials and projects

* **New Studies** = 3 new RCT's with QOL per year (including registration/fully sponsored)



* **Existing studies** = Under pre analysis/report preparation and discussion in 2006



Summary

- QLU now focuses on applied issues in clinical trial design/ implementation
- QLU still provides administrative support for the QLG including translations/contracts/modules, etc
- Future scientific projects will focus on external grant driven projects in the applied settings and with clinical group collaborations