

EORTC

Update on the activities of the Quality of Life Unit

Andrew Bottomley Ph.D

EORTC Quality of Life Unit, Brussels

22nd November 2006

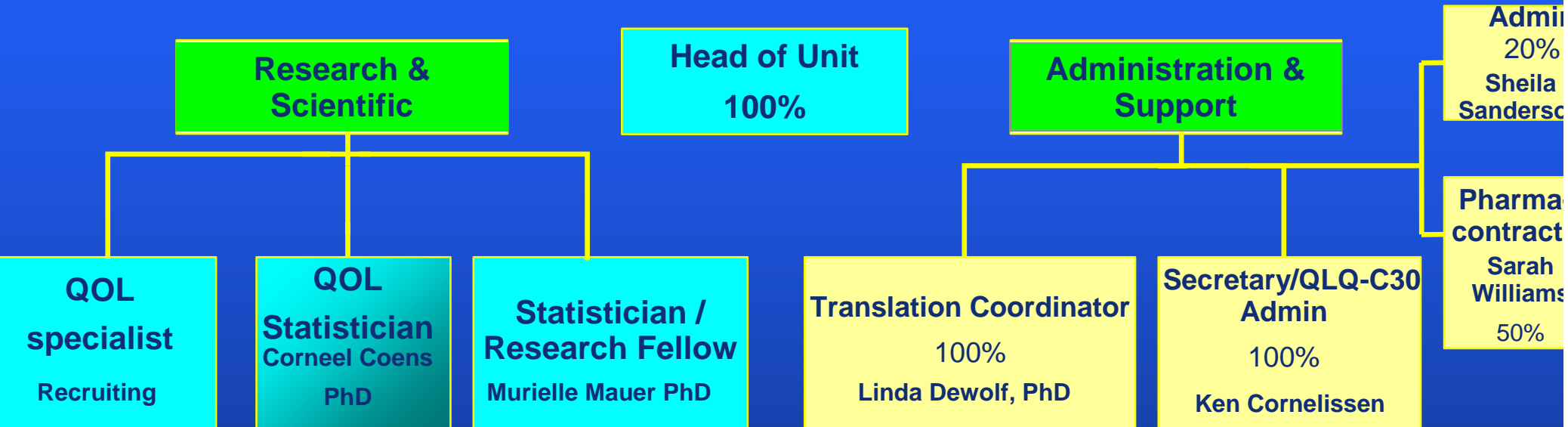
Recent changes at the EORTC Data Center

- Increase in new trials, often with companies for registration, but also many phase I and II trials
- **Major increase** in workload for conducting trials due to above (e.g. Fully monitored, high admin standards, etc)
- EORTC is now in a secure financial situation following a challenging few years
- New EORTC Director in post 1 November: Dr Podoor
- Increased staff levels: At full capacity - again in the Brussels Data Center (but other disciplines: Legal staff, accountants, QA staff).
 - All good news !

EORTC Quality of life Unit: Key Tasks

- To supervise the design, conduct and evaluation of QOL in selected cancer clinical trials
- To encourage physicians to pay greater attention to QOL: enhancing and co-ordinating the evaluation of QOL in cancer clinical trials
- To collaborate with the QLG on **joint scientific** initiatives to develop tools (direct and indirect)
- Work to manage all **translation programmes**, all **academic users** and all **pharmaceutical contracts** for the QLG

Structure of the Quality of Life Unit in 2006



■ Data Center/ Pharma/ EORTC
BCG/US ABBC grants

■ QLG funded position
2.7 FTE

QLQ-C30-module administration

Increasing demand:

In 2005 (12 Months): 1200 academic new users/downloads

**From Jan 2006 (11 Months): 1500 academic new
users/downloads**

E-mail enquiries per month 800 !!!!!

Contracts with pharmaceutical companies and CROs (for using the QLQ-C30)

- **50** Contracts in 2005
- **66** Contracts to date in 2006

Major effort spent in chasing late payers

Production and distribution of QLG manuals, etc.

- **Newsletters = Content from the editor (Martin) and QLG members, chase authors, get it printed and distributed ! What to contribute?**

Deadline 15 January. Contact Martin !

- **QOL CDs =ASCO, ESO, visitors, industry. Pressed 1000 in April**
- **Blue books, to all major users and conferences, but many now need to update and some pending now**

Managing a translation programme in the QLU

- **80** translations done in 2005
- **100** done and ongoing in 2006 (so far)
- Major work and initiatives expected in 2007 to improve quality (see the translation committee)

Web site

- Developing and maintaining web site updated every 7 days
- Average hits in 2005= 600 per month
- Average hits in 2006= 900 per month
- Exploring revising the web site with graphic designers
- Feel free to review and send comments to : Ken (kco@eortc.be)



Welcome to the EORTC Quality of Life Group



EUROPEAN ORGANISATION FOR RESEARCH AND TREATMENT OF CANCER
Group for research in Quality of Life

November 19, 2006

| | | | | | |
|-------------------------|----------------------|---------------------|--------------------------|-----------------------|--------------------------------|
| Sitemap | News | FAQ | Itembank | Links | EORTC homepage |
|-------------------------|----------------------|---------------------|--------------------------|-----------------------|--------------------------------|

- EORTC Quality of life Group
- History
- Function
- Activities
- Projects
- Executive
- Membership
- Future meetings
- Presentations of past meetings

Frequently Asked Questions

Please read this for the answer to our most common questions

Download Quality of Life Questionnaires

- EORTC Quality of Life Unit
- History
- Activities
- Personnel
- Questionnaires

Introduction

In recent years much interest has been focused on integrating quality of life as an endpoint for cancer clinical trials within the EORTC. The general purpose of Quality of Life assessment in clinical trials is to provide a more accurate evaluation of the well-being of individuals or groups of patients and of the benefits and side-effects that may result from medical intervention.

As Quality of Life has become increasingly important within the EORTC, it has become

Developing and managing the Item Bank

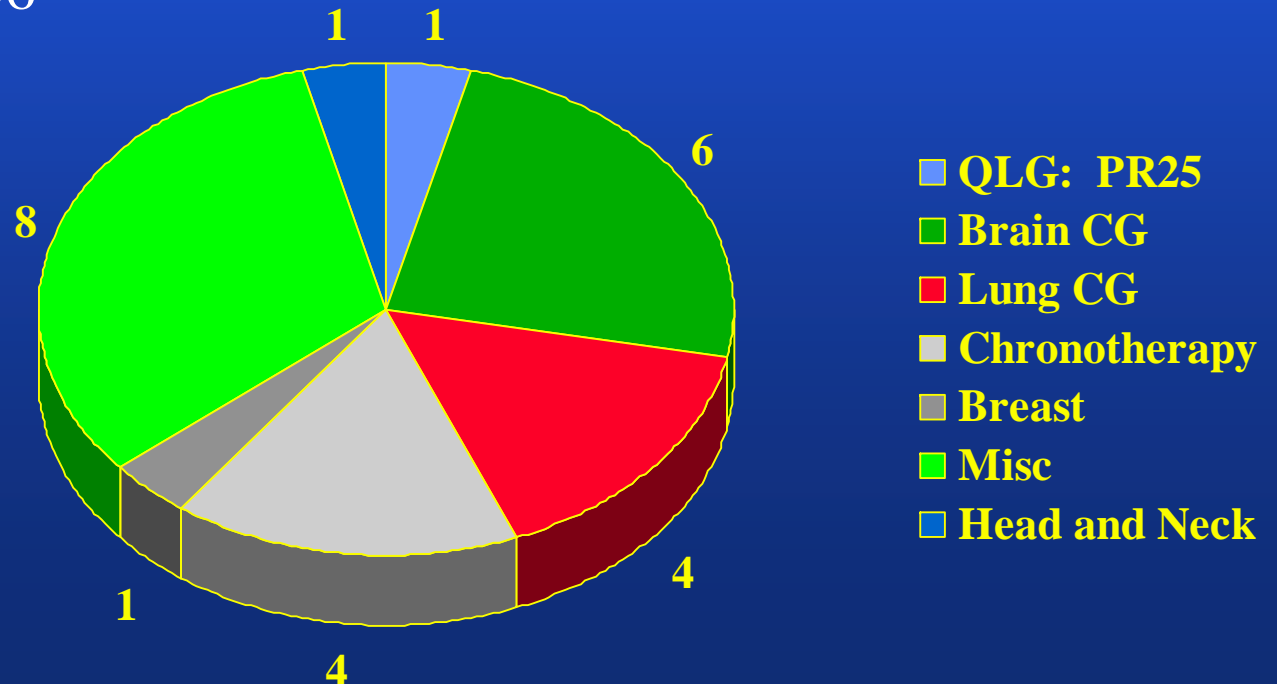
- **Version 1: completed in 2001 (see blue book, 2002)**
- **Became dated, old software, old data, etc.**
- **Version 2: 2006 / 2007 (Testing)
by a Brussels IT company**
- **Testing and demo shown by Teresa at this meeting!**
- **Data entry (1000s of items) to follow in 2007**
- **Onsite management update by Translation Coordinator in the QLU (Linda)**

QLU scientific functions : New studies, analysis and preparation of trials and projects

* **New Studies** = Five new RCT's with QOL per year (including registration/fully sponsored). In 2x Lung, 2x Breast, 1 Brain



Existing studies = Under pre-analysis/report preparation and discussion in 2006



Summary

- QLU still major administrative support for the QLG including translations/contracts/modules/Item Bank
- QLU scientific focus is on managing clinical trial design, implementation
- Hopefully future scientific projects are also anticipated between the QLG and the QLU