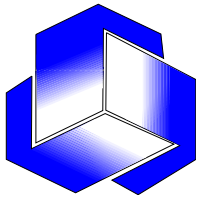


# **Development of EORTC Fatigue Module**

**EORTC Quality of Life Group Meeting**

**November 22, 2007**

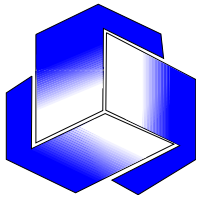
**Belfast**



# Current Phase III Collaborators

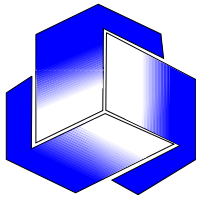
Coordination: J. Weis & S. Brüggemann

- **Austria:** B. Holzner
- **France:** T. Conroy
- **Germany:** C. Fleissner, S. Singer, H. Flechtner
- **Italy:** F. Efficace
- **Sweden:** E. Hammerlid,
- **Spain:** J.I. Arraras
- **UK:** A. Lanceley, T. Swift, L. Jones, A. Griffin, C. Byrne
- **Data Centre:** A. Bottomley, Brussels
- **Translation Centre:** L. Dewolf, Brussels



# Current State

- Currently 318 completed questionnaires been received
- 304 have been entered into the database
- Only a few questionnaires from the UK are missing
- ISOQOL presentation Toronto Oct. 2007

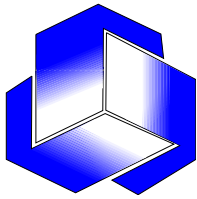


# Distribution of patients

## Country of Origin: Type of Care (November 2007)

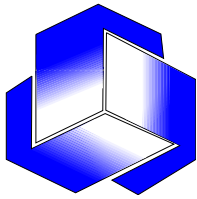
Country of origin	Acute care (in/out patient)	Rehabilitation	Palliative care/ Hospice	unclear*	Total
Germany	17	15	11	1	44
U.K.	17	0	0	14	31
Austria	15	15	15	0	45
Sweden	15	13	14	3	45
France	16	15	15	0	46
Italy	22	15	8	0	45
Spain	17	13	16	0	46
Other	1	0	1	0	2
<b>Total</b>	<b>119</b>	<b>86</b>	<b>80</b>	<b>18</b>	<b>304</b>

\*unclear: Missing data or difficult to categorize; further medical information needed to make categorization



## Location of Tumor (n=304)

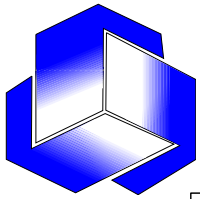
	Frequency	Percentage (%)
Breast	57	18,8
Colorectal	20	6,6
Lung	18	5,9
Head/Neck	28	9,2
Prostate	21	6,9
Testicular	5	1,6
Pancreatic	5	1,6
Haematological	73	24,0
Gynaecological	50	16,4
others	25	8,2
Breast + Haematological	1	0,3
Breast + Gynaecological	1	0,3
Total	304	100,0



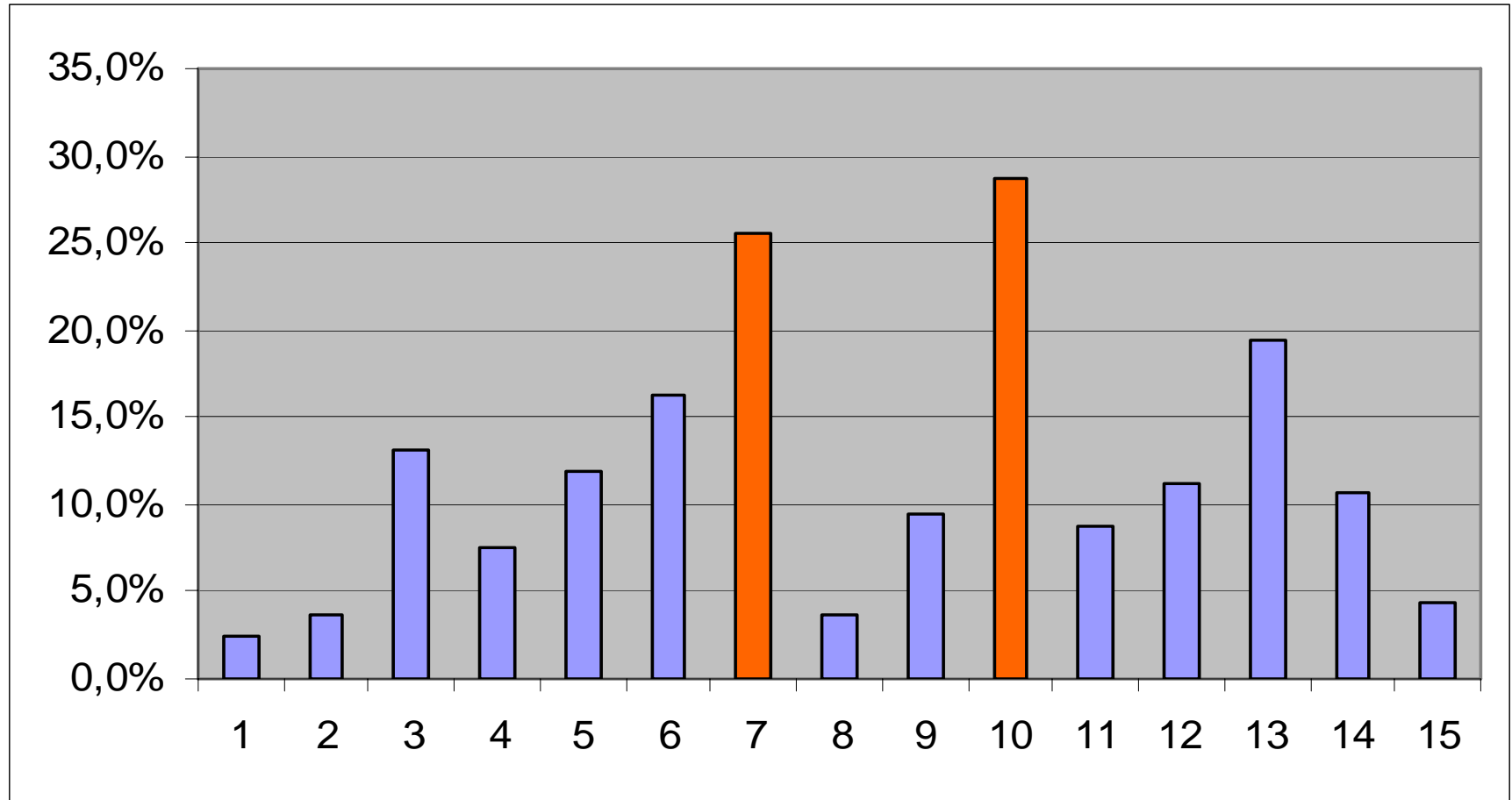
# ECOG Score

ECOG Score	Häufigkeit	Prozent
0 (Fully active)	75	24.6
1 (Restricted)	104	34.1
2 (Self-care)	79	25.9
3 (Limited self-care)	38	12.5
4 (Completely disabled)	7	2.3
Missing	1	0.7
<b>Total</b>	<b>304</b>	<b>100.0</b>

Mean score: 1.33, SD: 1.054

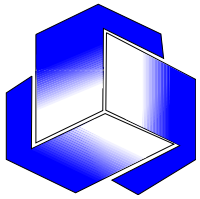


# Aggregate difficult/confusing (n=304)

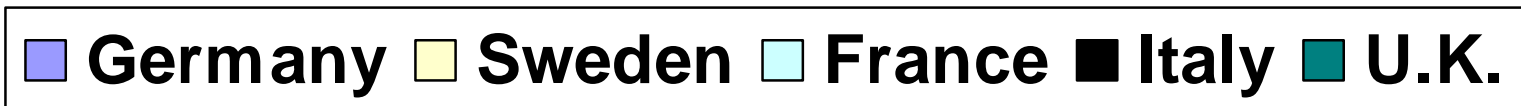
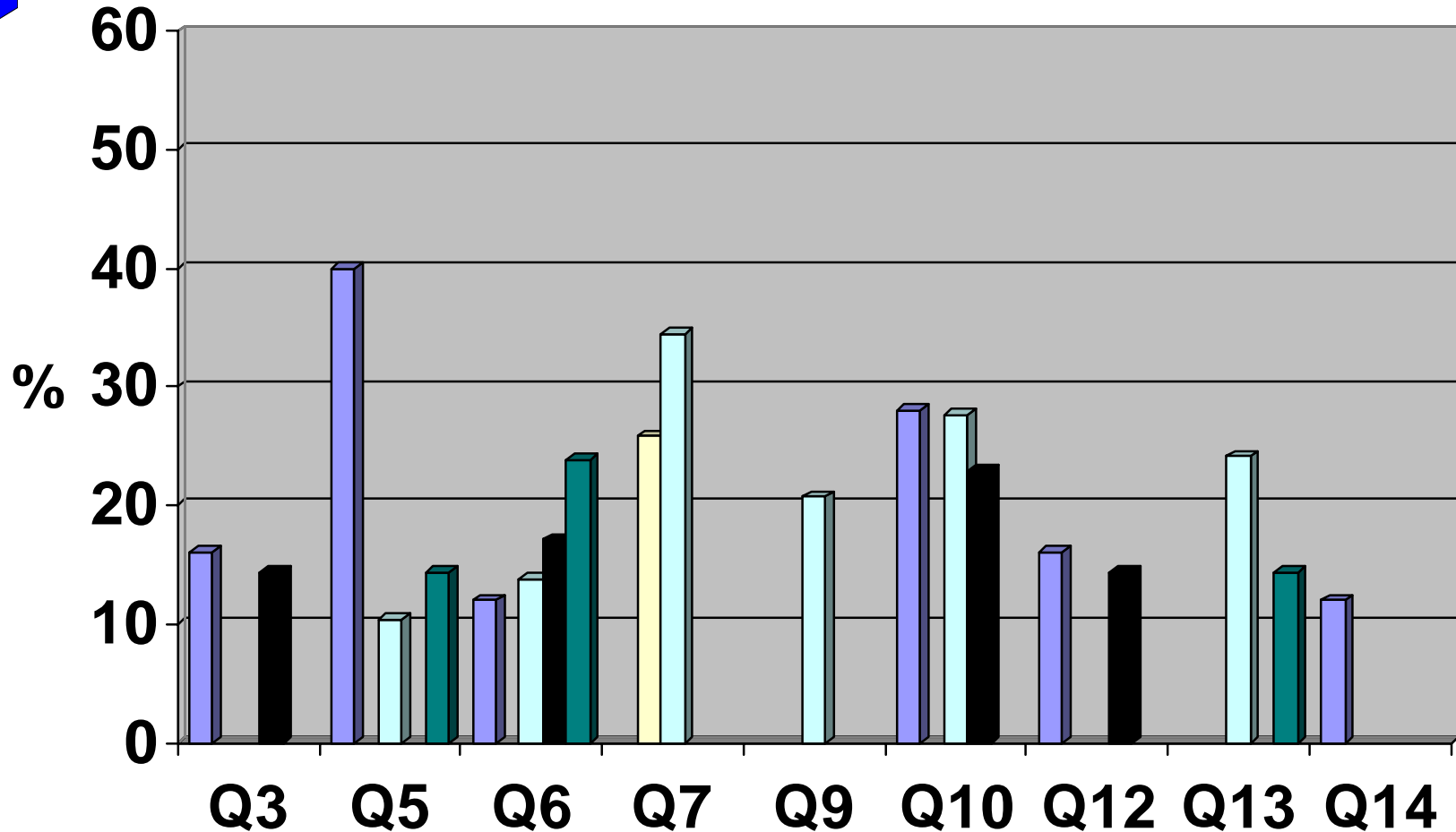


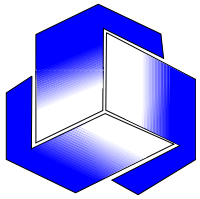
Q 7: Did you feel frustrated?

Q10: Did you feel vulnerable

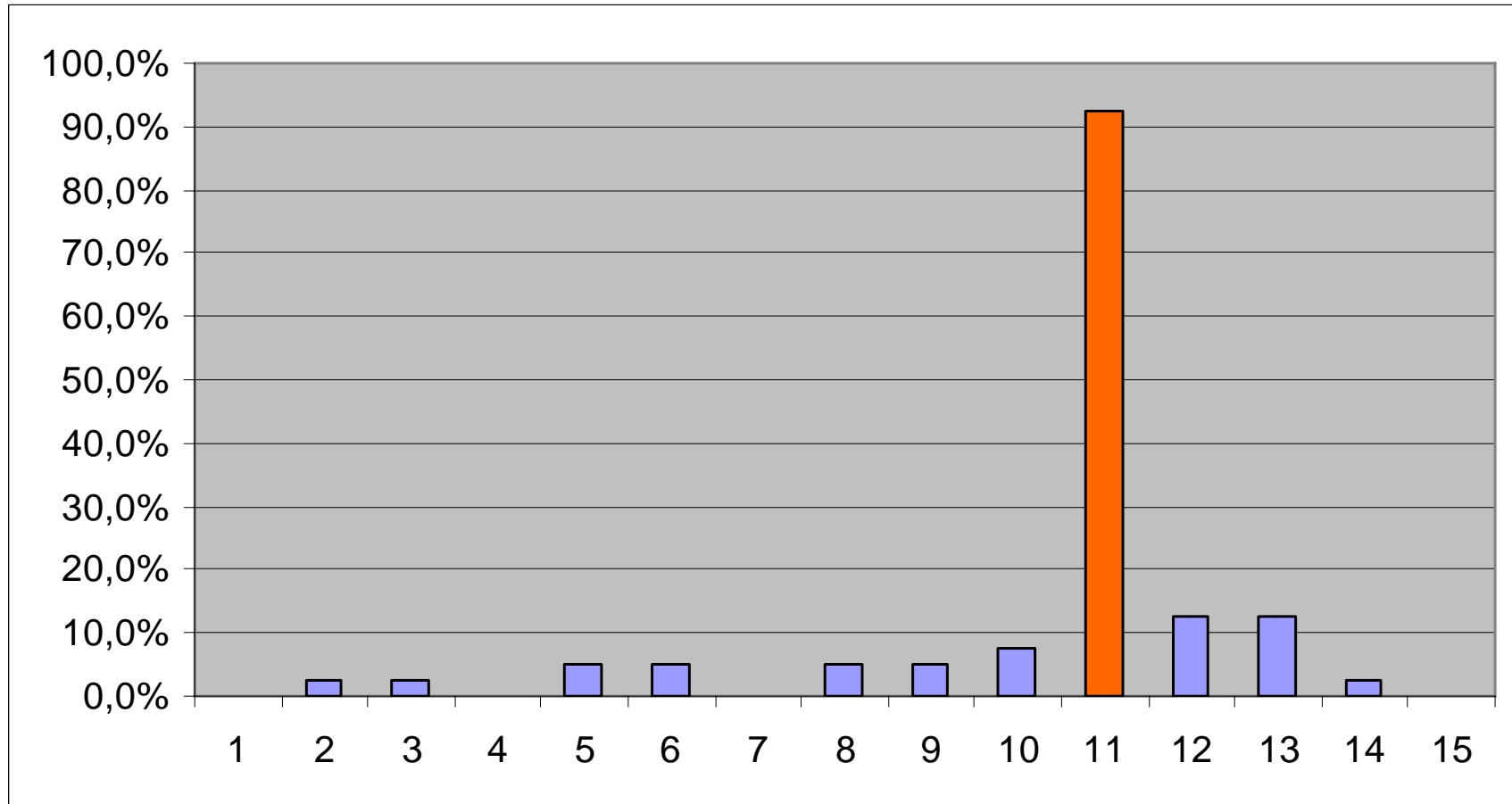


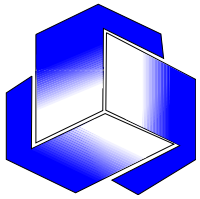
# Cross-country difficult/confusing (n=304)



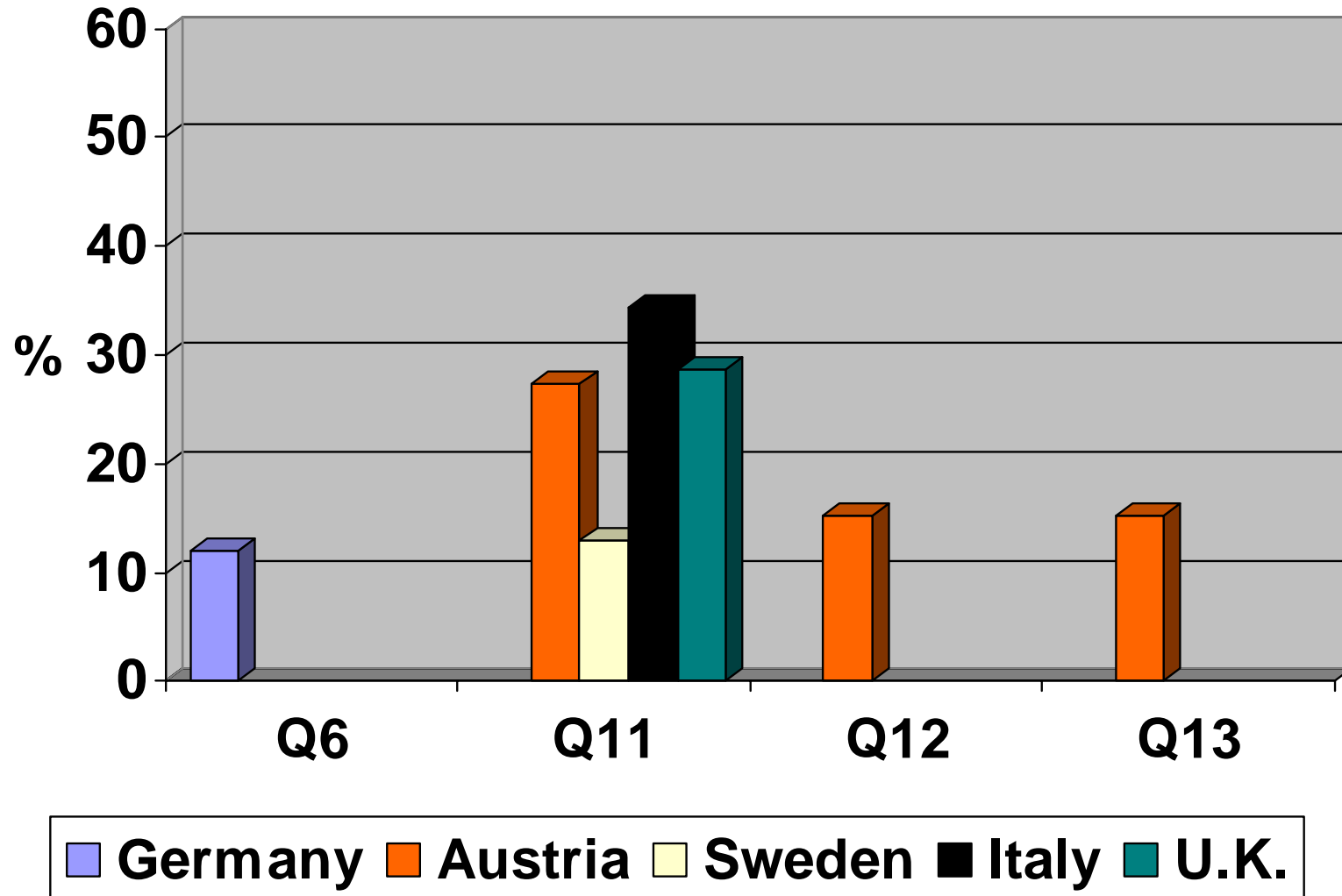


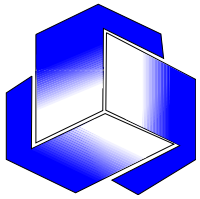
# Aggregate upsetting/annoying/intrusive (n=304)





# Cross-country upsetting/annoying/intrusive (n=304)





# Next steps

- Data input will be completed in December 2007
- IRT analyses January 2008
- Finalizing item wording (new items, rewording)
- Revised version of FA-R15 Phase III by the end of February
- Final report April 2008