

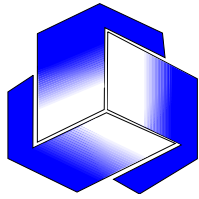
Development of EORTC Fatigue Module

EORTC Quality of Life Group Meeting

March 9, 2007

Brussels

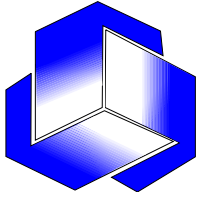
J.Weis & Y.Gao



Current Phase III Collaborators

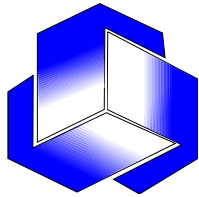
Coordination: J.Weis & Y.Gao

- **Austria:** Bernhard Holzner, Innsbruck
- **France:** Thierry Conroy, Metz
- **Germany:**
 - Claudia Fleissner, Berlin
 - Susanne Singer, Leipzig
 - Henning Flechtner, Cologne
 - Fabian Fehlaue, Hamburg
- **Italy:** Fabio Efficace, Rome
- **Sweden:** Eva Hammerlid, Goteburg
- **Spain:** Juan Ignacio Arraras
- **UK:** Louise Jones, Andrea Griffin, Clare Byrne, Liverpool
- **Data Centre:** Andrew Bottomley, Brussels
- **Translation Centre:** Linda Dewolf, Brussels



Shortly after Southampton...

- New collaborator from Spain: Juan Ignacio Arraras
- France, Italy, Sweden completed all patient interviews.
- Currently 196 completed questionnaires been received and entered into the database
- *Only UK is still waiting for the green light to go ahead*

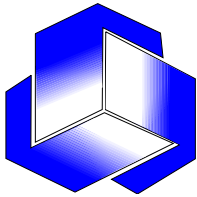


Distribution of patients

Country of Origin: Type of Care (Up to March 5, 2007)

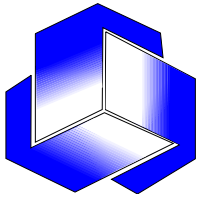
		Acute care (in/out patient)	Rehabilitation	Palliative care / Hospice	None	Total
Country of Origin	Germany	16	15	4	1	36
	Austria	12	7	5	0	24
	Sweden	15	13	14	3	45
	France	16	15	15	0	46
	Italy	22	15	8	0	45
Total		81	65	46	4	196

**Spain has completed 9 interviews, not yet included in the database



Location of Tumor

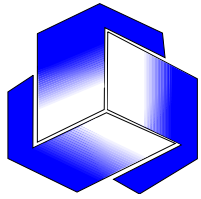
	Frequency	Percentage (%)
Breast	29	14,8
Colorectal	13	6,6
Lung	8	4,1
Head/Neck	25	12,8
Prostate	14	7,1
Testicular	2	1,0
Pancreatic	4	2,0
Haematological	64	32,7
Gynaecological	16	8,2
others	19	9,7
Breast + Haematological	1	0,5
Breast + Gynaecological	1	0,5
Total	196	100,0



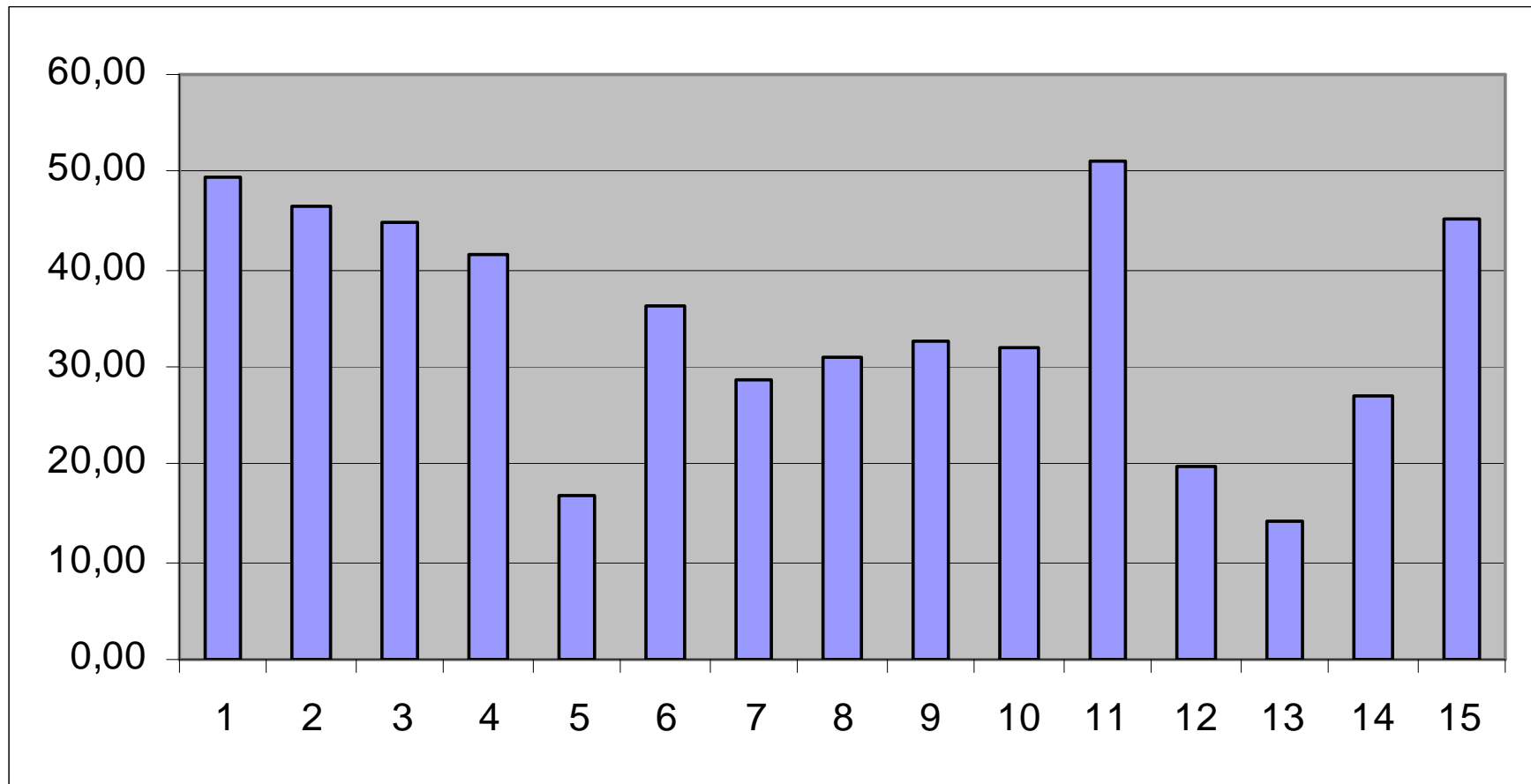
ECOG Score

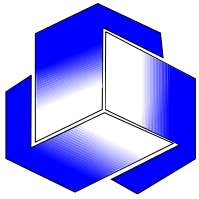
ECOG Score	Frequency	Percentage
0 (Fully active)	49	25,0
1 (Restricted)	66	33,7
2 (Self-care)	49	25,0
3 (Limited self-care)	26	13,3
4 (Completely disabled)	6	3,1
Total	196	100,0

N: 196; Mean score: 1,36; SD: 1,088

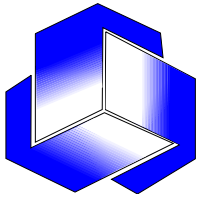


Descriptive Statistics of EORTC QLQ-FAR-15

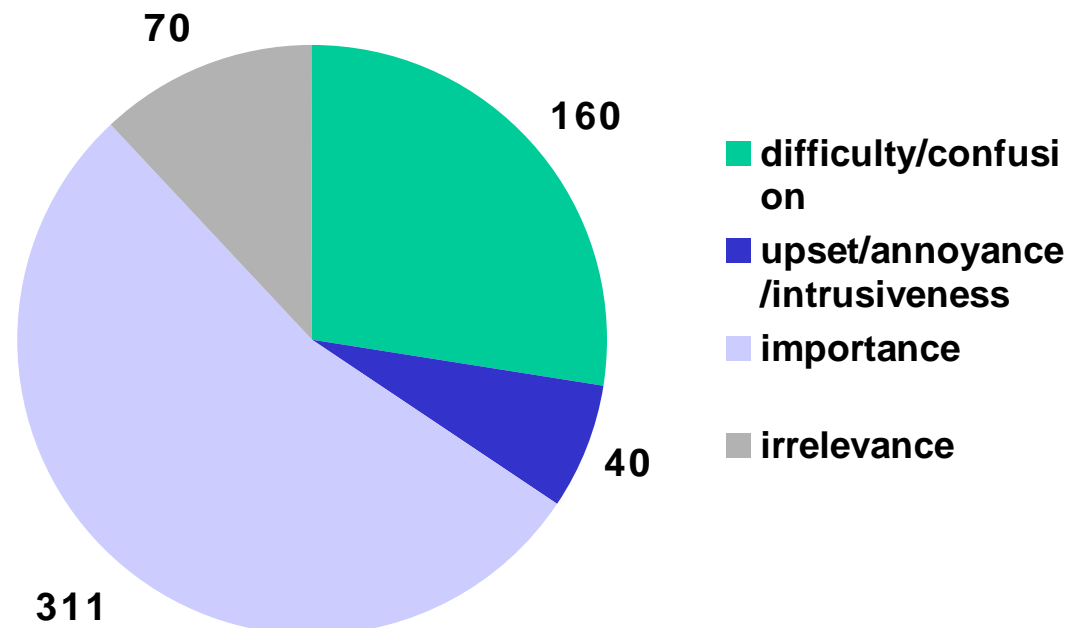
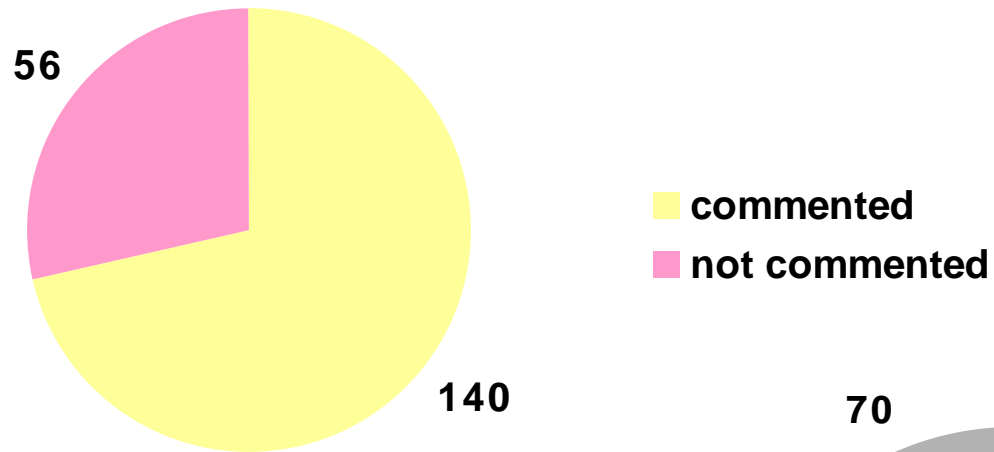


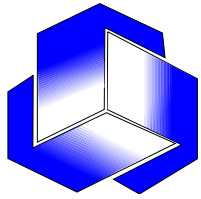


Preliminary Findings on Patient Evaluation of EORTC QLQ FA R15 Questions

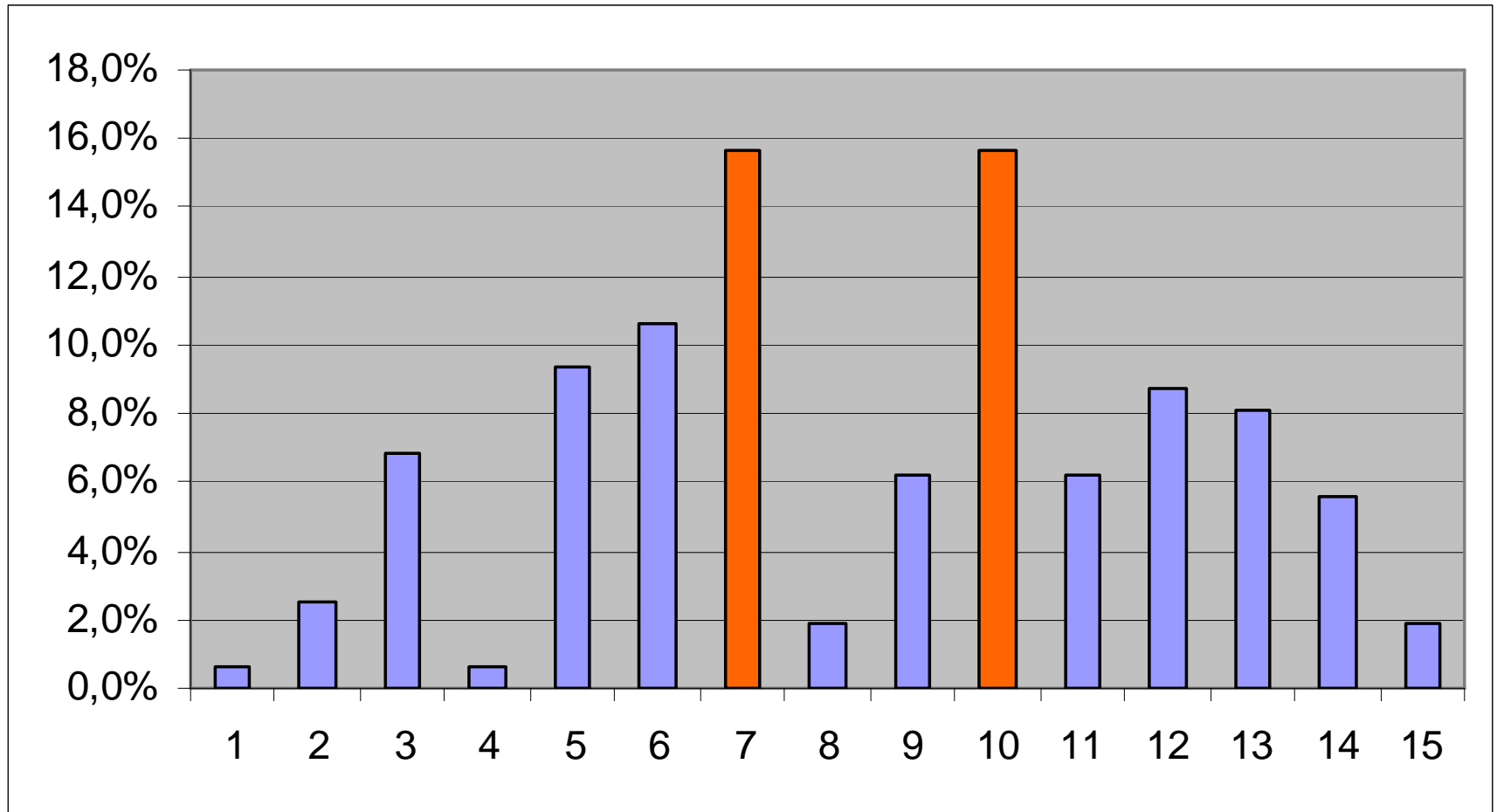


General information



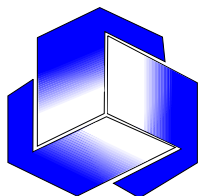


Aggregate difficult/confusing

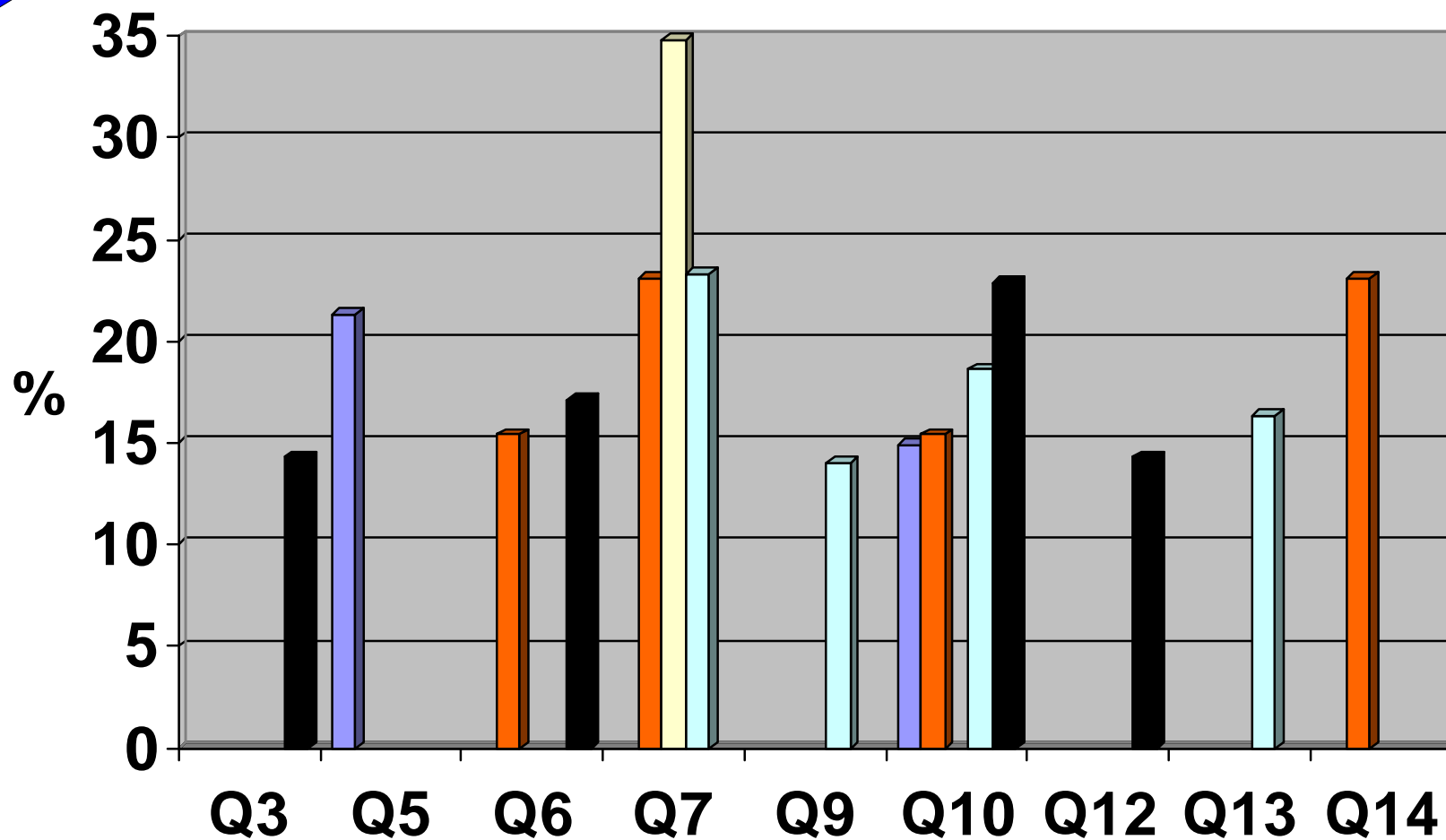


Q 7: Did you feel frustrated?

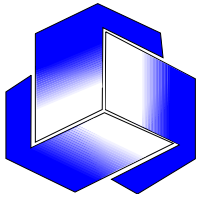
Q10: Did you feel vulnerable



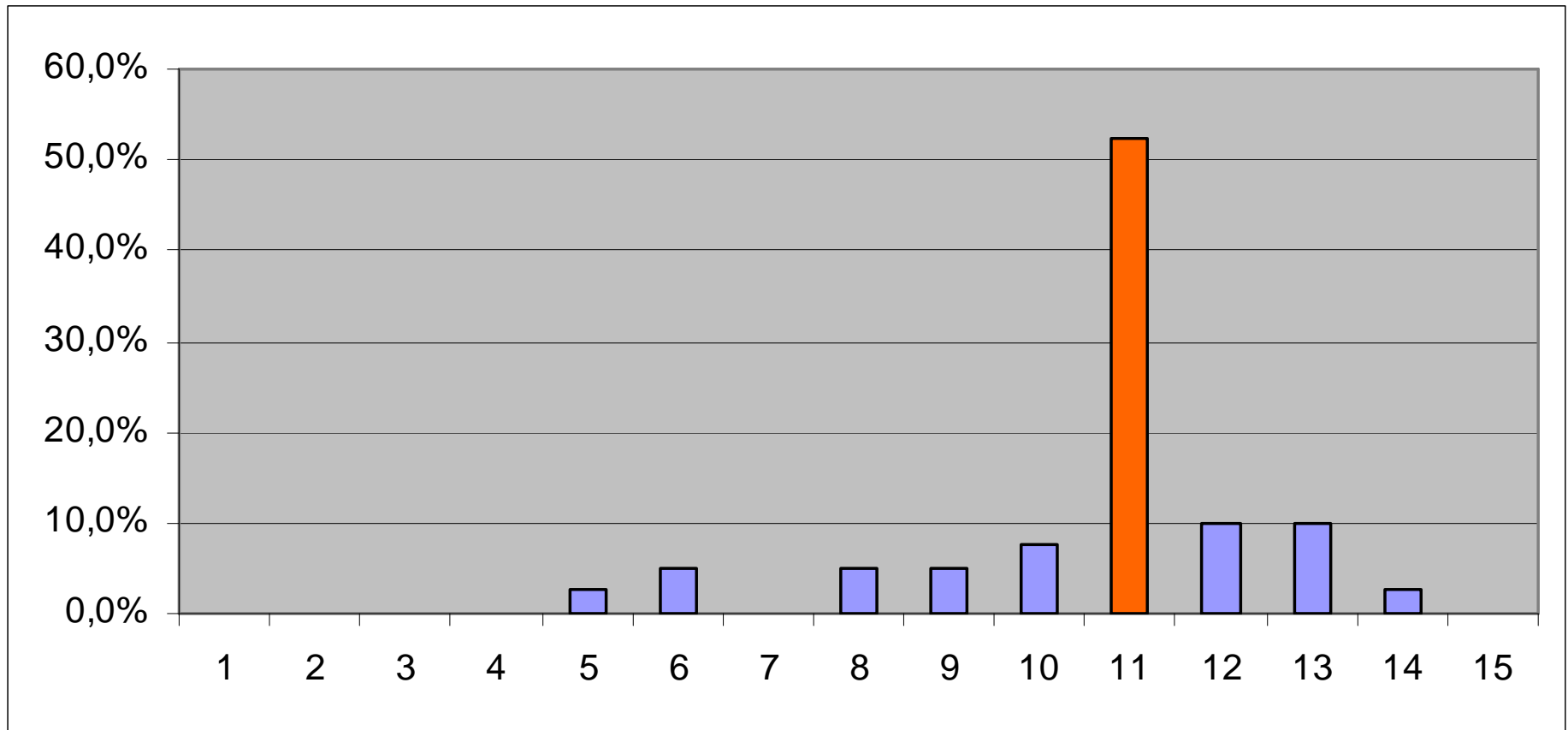
Cross-country difficult/confusing

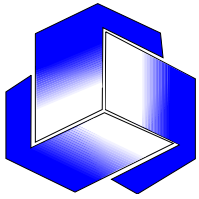


■ Germany ■ Austria ■ Sweden ■ France ■ Italy



Aggregate upsetting/annoying/intrusive





Cross-country upsetting/annoying/intrusive

